

# FUEL CELL SENSORS

PAS specializes in the design and manufacture of platinum electrochemical fuel cells & sensor systems. We have decades of experience in the engineering and design of fuel cell cases, fuel cell chemistry, heaters, and sampling systems of many types.

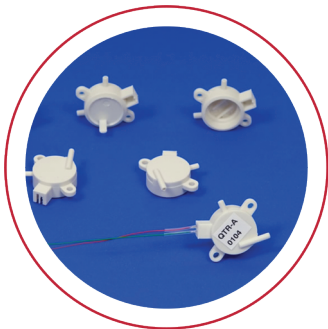
## KEY FEATURES:

- Accurate & Precise Sampling Assembly
- Fuel Cell Heater Optimized @ -40°C
- Calibration - Wet or Dry

## FUEL CELL APPLICATIONS:

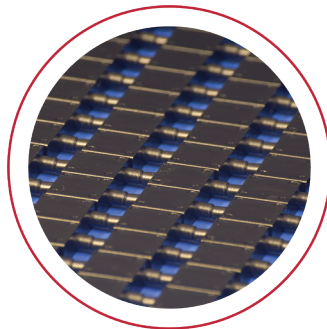
- Ignition Interlocks (BAID'S)
- Evidential Breath Alcohol Analyzers (EBT's)
- Police Grade Evidentiary Breath Alcohol Instruments
- Alcohol Screening Devices (ASD's)
- Passive Alcohol Sensors

## FUEL CELL SENSORS & SAMPLING SYSTEMS



### PAS Qtr A

A fuel cell with high specificity for alcohol in a round cell case that fits almost anywhere a hardy high temperature or low temperature design is desired.



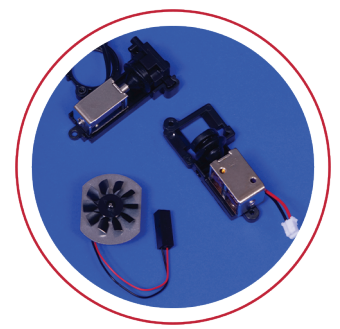
### PAS Mini

For compact designs that provide all the capabilities of larger cells. This design has already found success with ignition interlock applications but is ideal for compact hand-held instruments.



### PAS Round

Our standard round 32mm cell is ideal for use in passive instrument designs to accurately detect the presence of alcohol.



### Sampling Systems

Precision, reproducibility, and accuracy of your instrument design can only be as good as the sample management system you are using. If you are still searching for just the right sampling technology, give us a call.

LEARN MORE ABOUT FUEL CELLS

VISIT [WWW.PASINTL.COM](http://WWW.PASINTL.COM)  
OR CALL 800.660.7643

